

12¢ 1851 Bisect - Lower left Diagonal.

New York & Phila. R.R. (1852)

Two covers loaned S.B.A. by Dan Kelleher Jan. 2, 1951 - as follows:

(A) Blue folded letter - tied by above R.R. postmark in black, 30 MM, date "May 11" - letter inside dated New York May 11, 1852, signed by "Hitchcock & Reading" - and addressed to "Mr. George Waters - Georgetown D.C." - enclosures cause of double rate - "We enclose a/c - Sales - No. 711 - 714 & 730 - Bisect is very sharp early impression.

(B) Blue folded letter - tied by above R.R. postmark in black - 30 MM - date May 13 - letter inside dated New York May 13, 1852 signed (ober)

by "Hitchcock & Reading" and addressed to Mr. George Waters, Georgetown D.C." - in different handwriting than above but an added postscript is in the same handwriting. The bisect is an upper left diagonal."

12¢ 1851 - Bisect tied by R.R. postmark

The Kelleher cover

S.B.A. wrote Dr. W. S. Polland 6/3/51:

Re - your cover by Hamburg Packet. You inquire if Jessup could explain it. I am rather positive that he could not. In fact, I really do not know of anyone who could. The reason is that very few have any real knowledge of foreign rates and markings. When I get stumped on such a cover I know of no one with whom I could consult. By any chance, do you have any correspondence with Elliott Perry? If so, you might send it to him for an analysis but do not mention my name as we are not friends. I do not believe that he could furnish any data that would help. As far as I am aware Edgar's knowledge of "foreign rates and markings" is very limited. It is the meaning  
(over)

of the markings that is all important. One can find the various rates in tables that have been published - My Volume II - for example - but the rates themselves are but the first step in a study of foreign rate covers. I hope you fared well in the Keffer sale, (Collector's Shop). I received a letter yesterday from Jessup - from New York, dated ~~Fr~~ Friday (the 1st). He stated that he attended the Keffer sale, and saw Dan Kelleher who had the 12¢ Bisect cover with him.

Here is your photo which I have been holding - Dan's price \$400.00 - Edgar stated that the cover didn't have a postmark!! That remark, I fail to understand - since when do R.R. covers have two postmarks? I am advising him to buy the cover as it is unquestionably worth \$400 - and good as gold,-also very lovely. One can find 12¢ bisects "Via Nicaragua" but who can show a 12¢ Bisect  
(cont. on next card)

Card #2.

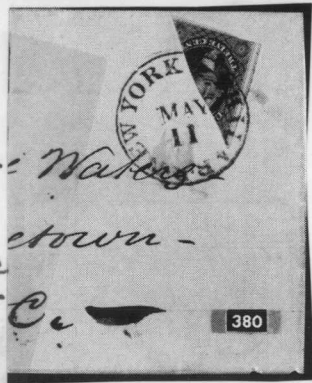
tightly tied by a R. R. postmark? Charlie Remele would surely consider the cover worth \$400. I think it is a show piece. Do you not agree?"


SIEGEL SALE OCT - 7 1957

Tied By  
New York & PHILA R. R.  
To Georgetown D.C.

This Cover loaned SBA By Dan Kelleher  
Jan 2 1951. Blue F.L.x P.M. In Black  
30MM. Letter Inside New York May 11  
1852 - Enclosures Cause of Double  
Rate 1

Sold @ \$675<sup>00</sup>



380  12c Black, Diagonal Bisect (17a). Tied on neat cover by bold New York  
& Phila R.R. pmk, rare usage on cover to Georgetown, D.C., Very  
Fine ..... (Photo) E. XIV

Kelleher Offered This To Jessup In 1951 @ \$400<sup>00</sup>