

12¢ 1851 largest unused block

S.B.A. wrote P.Ward 5/18/51:

"12¢ 1851 - largest unused block - You listed your block - Ex-Gibson - 'a superb mint block of ten.' What about the unused block of 12 - (4 x 3) in the Crocker Sale by Harmer, Rooke & Co., London - Nov. 1938 (Lot 58)?"

1851 - 12¢ Unused Block 12 - (4x3)

Lot 58 - 12¢ black, Scott 36, an unused block of 12 (4 x 3), with full original gum,  $2\frac{1}{2}$ mm. plain sheet margin at right, margins clear of the design top and right, three stamps in the bottom row are touched as are two stamps at left. There is a vertical and a horizontal crease, neither of which is very bad; two of the stamps are very slightly gum stained, but the general appearance is fresh and the block is of the greatest rarity, a block of 4 cataloguing 1,200dols. (See Photo) Sold @ L 130

Sale of the Crocker collection by Harmer, Rooke & Co. Nov. 23, 24 and 25, 1938.



124 1851 BISECTS

A 190



B.A.

56

MOBILE ALA., JUNE 13 1863.

Plate position 8

12¢ 1851 Bisect plus 3¢ 1851

Submitted by the P.F. Expert Committee Dec. 1950 -  
S.B.A. stated:

No. 2771

12¢ Bisect plus 3¢ 1851, tied by N.York & Phila.  
R.R. addressed to Baltimore - (see photo)

S.B.A. stated:

"In my opinion this cover is genuine - the  
bisect used to make a triple rate - both stamps  
shades and impression, are correct for a use in  
June 1852 - Note - In the Worthington sale in  
August 1917 there was a similar cover - 12¢  
bisect plus 3¢ 1851 from New York to Providence  
Stamps tied by the R.R. "U.S. Express Mail" -  
The bisect was an upper right diagonal. "  
(on this cover a lower left)

Via Nicaragua      12¢ Bisect      Aug. 9, 1853  
Lot 61 in the Harmer Rooke sale of Oct. 25, 1949.  
E. Cole wrote 11/14/1949:  
"Re Lot 61 in Harmer Rooke sale. I bought it  
Doc Polland. No monkey business, opened at  
about \$350 if I remember, it may have been less.  
Keffer and Fox both bid on it, and I think that  
Hart may have bid too, last bid from the floor  
\$450.00, I bid \$460. Have records of 12¢ bisects  
selling for much more, one in a Green sale for  
\$610 for example. If anyone has to have a 12¢  
bisect this is the way to get it in my opinion,  
on 'a Via Nic cover."

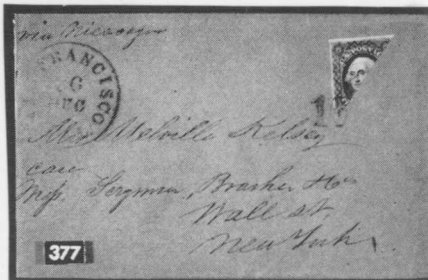
Re - 12¢ 1851 Bisect

Dr. Polland wrote 2/15/1950:

"Thanks very much for your letters of the 13th with 12¢ '51 bisect. It is a very pretty item. In the Stephen D. Brown Sale Lot 1956 sold for \$150.00. About 1947 I bought this cover in a Fifield auction for \$125.00. It is very fine."

SIEGEL SALE OCT - 7 1957


TIED "10"



San Francisco  
16 DEC 1853  
To New York  
Routed

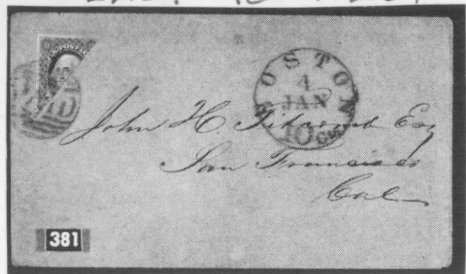
"Via Nicaragua"  
But sent Regular Mail  
Sold @ \$425.00

P.F. Ctf.

377  12c Black, Diagonal Bisect (17a). Tied 10 cancel, San Francisco, Cal. pmk  
on cover to New York, ms "Via Nicaragua", Very Fine with Philatelic  
Foundation Certificate ..... (Photo) E. XIII

~~Photo of~~ This sent SBA By Dr Pollard 10/18-54  
See A620 - Also see SB 33-43


SIEGEL SALE OCT - 7 1957  
EAST TO WEST



P. F. CTF

Boston Paid In Grd  
"Jan 4"  
To San Francisco

Sold @ \$500<sup>00</sup>

381  12c Black, Diagonal Bisect (17a). Attractively tied Paid cancel, "Boston 10 cts, Jan. 4" pmk. on cover to San Francisco, Rare East to West usage, Very Fine, with Philatelic Foundation Certificate ..... (Photo) E. XII

SIEGEL SALE OCT - 7 1957

Postmark is  
San Francisco  
PAID 6




Via Nicaragua

THIS IS JULY 16 1853  
See Back

Sold @ \$575<sup>00</sup>

EX - Caspary - Lot 572 sold To Stolow @ \$625

376  12c Black, Diagonal Bisect (17a). Beautifully tied San Francisco, Cal.  
Paid 6 pmk on neat cover, ms "Via Panama", a brilliant cover and one of  
the finest "San Francisco Bisepts" known, Ex Caspary ..... (Photo) E. XIII

VERY EARLY JULY 1853

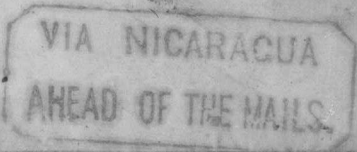


Note - The Caspary Catalogue Stated The  
Postmark is PAID 6 JULY 13 - Memo  
Reads "Via Panama 15 July 53 - In  
1853 July 15 Was FRIDAY.

Messrs. Fisher & Co.

Boston.

Via Nicaragua.



THRU THE KINDNESS OF THE  
OWNER OF THE WITHIN ITEM,  
THIS PHOTOGRAPH WAS MADE  
BY STANLEY B. ASHBROOK. IT  
IS RESPECTFULLY REQUESTED  
THAT NO USE BE MADE OF  
THIS PRINT WITHOUT THE  
CONSENT OF THE OWNER OF  
THE ORIGINAL.

"Via Nicaragua" Bisects

See Luff book page 70 and 71

See 124 1857  
Directs

---

See

~~B~~

12¢ Split "Via Nicaragua"

Knapp has two

See file "S.F. sailing June 20" ~~1949~~  
memo of exhibit C.C.

# U. S. Notes

By PHILIP H. WARD, JR.  
1616 Walnut St., Phila. 3, Pa.

## 1851 3c, 12c Splits Used On Covers

Mekeels  
Apr 24  
1953

In the early days of our postage stamps it was not unusual to cut the stamp in half and use the part stamp to pay postage. This usage was made necessary by the lack of stamps of lower face value. While we have never seen a postal law or regulation authorizing such procedure, nevertheless a good number of these letters passed through the mail and were accepted at destination as prepaid.

The 1847 10c is found cut in half and used as 5c from several cities. The 1851 12c split is more frequently located with most of these letters coming from California. The 1851 3c split is somewhat rarer and until recently we had never seen an official letter that mentioned such a variety. None of the 3c varieties mentioned by Dr. Chase were used from California but we see from a letter of the Postmaster at Oswego, N. Y. dated in 1853 that 3c splits from California were reaching his office.

There exist two letters from Cuba that were sent by ship from that point and then on reaching New York were sent on to Canada. The 10c rate on each was paid by a split 12c together with a strip of four of the 1851 1c. Whether these stamps were applied by one in Cuba, who was not able to pay the 10c rate in stamps in any other way, or whether they were applied on the ship, we cannot say. Both covers are most desirable and the one in our own collection has been described by Stan Ashbrook as the finest split he has ever seen.

We have just found two letters from Postmasters of the time, which from our point of view give more standing to the 3c split than it has heretofore had. We have never had much faith in those we have seen but if we could locate one from California we would really believe we had found something.

The two 1853 letters from Postmasters in New York State are as follows:—

“Post Office  
Oswego N. Y. Aug 6th 1853

John Oakford Esq  
Chief Clerk  
P. O. Dept.  
Sir/

I desire to call your attention to the practice which prevails to some extent of prepaying letters & papers by stamps *cut in halves*, & to ask whether I am to recognize such prepayment as legal?

Letters frequently reach this office particularly from California, with one half of a twelve cent stamp, (cut diagonally) & marked on the accompanying post bill as ‘paid by stamps’, having been distributed as such at the New York D. P. O.

Newspapers some times come with *one half* of a three cent stamp but in the same way, which is the only evidence of prepayment.

Please inform me whether such prepayment is proper or not — Sec. 367. Chap. 50. of the Regulations, seems to define fully enough what are legal stamps & what not, but the practice is becoming so frequent & the New York Office recognizes so many letters prepaid as above, that I prefer to ask for information before exercising the responsibility of disregarding such prepayments.

Respectfully Yours &c  
Saml R. Beardsley

“Post Office  
Crown Point Essex Co N Y  
September 20 1853

Sir

I have in this office a letter mailed at ‘Union City, Cal. Aug 11. 1853 — entered on the Post Bills prepaid by stamps’, on which there is only the half of a twelve cent stamp, cut into two pieces diagonally, one of which is attached to this letter. I have also rec’d letters and papers entered as prepaid in the same way by fractional stamps.

I have decided that such fractional stamps are not proper to pay postage, & that for aught that appears the original stamp might have been cancelled.

I will be obliged if you will inform me if I am correct in this view I have taken of the subject.

Respectfully Your  
Obt Servt  
C Fenton P.M.

Hon John Marron  
3d Asst P.M. General  
Washington  
D. C.”



# 'S WEEKLY STAMP

APRIL 24, 1953

ing postmarker that is semi-automatic in changing dates. On the old style devices, the type-changing operation requires the opening of the box containing the type, removing the retaining head from the postmarker, removing the type from the stamp with tweezers, searching for and replacing type, putting the head back on the hand-stamp, closing the box, putting it away and removing the ink smears from the clerk's hand.

The new style can be changed in one-fifth the time of the old style. The secret is in the self-contained type on wheels, the changes are made by pushing the appropriate type wheel one notch where it clicks into position. This operation is performed with the locking pin which screws into the side of the unit and is always available. The only removable piece of type is the year slug which fits into a slot in the outer edge of the stamp housing. It is held in position by a spring ring. When the year slug becomes obsolete it is removed by releasing the tension of the spring ring and pushing it from the slot with the locking pin. Then the new year slug is pushed into the slot where it clicks into place.

The unit weights less than 6 ounces. The metal parts are made of case-hardened steel for durability and are nickel plated to prevent rusting. They are provided with hard maple handle, reinforced with a steel shaft and may have either a vertical handle or hammer type. The cost per unit is said to be about the same as the old duplex style.

This postmarking unit is used at the mail dispatching section on oversize letters that cannot be run thru the cancelling machine, and also on boxes that require the date to be shown, such as special delivery and insured parcels, also on ordinary mail when the date as applied by the cancelling machine is not readable.

The new style postmarker is intended to become standard equipment for all air mail fields, transfer offices, terminals, and post offices which require hand postmarking equipment.

## U. S. ORIGIN

by D. ORRIN PI

A series of Philatelic Mor  
Advanced and Lesser Stu  
Discovery . . . . . Allied I  
Consummate Opinion.

All Rights

Dear Philatelic Hobby:

*Explanatory Note:* The following amount of Philatelic and B Much of which has been period of many years. I pr revise or change any of the covers many branches of ou research which held collectors' continually changes but on the in Mekeel's for the benefit o

## Embossed & Pate Holiday & Pictor

EMBOSSSED-DESIGN ENV of envelopes of various designs a inclosure sizes, scarce tiny envel sizes were set until many years much variety but the greater fie signs and occasional group came velope flap may be embossed wi envelopes are generally termed: ways used by women. Valenti holiday and friendship cards. envelopes with lithographed desi cernible on front.

PATENTED ENVELOPES- latelic endeavor. They seldom stocks. Patience is an asset in forget the where-withal to add to Patented envelopes arrived ea day. Many were never adopted f of the patent office, the large r the models have come to hand examples are very fine property.

Types of envelopes to disco (1860's) are another branch of velope specialty. The ideas of m Letter Sheets, Registered For Cards and Money Order, Postal patented group.

EARLY HOLIDAY CARDS day-reminder with a sentimental greeting card of holiday flavor. ment of regulation of 1898. Th known post-picture cards. Have sizable number for they are real on most is on the front-picture s of beauty as pictures are lithog date of postmark ties up with th the card very choice. As to early nature there is a crudeness crudeness is also noted in sentim side early covers and also among valentines; a clue of American-m

PICTURE POST CARDS- CARDS—It appears (and is know from specimens viewed and stud into use on the continent; they cards, but mainly of a comical pose. European hotels went in f

(Continued on

**HIGH PRICES PAID**

*Urgently Needed*

**UNITED STATES  
and FOREIGN**

**Collections - Accumulations**

**LARGE BUYERS FOR OVER 20 YEARS**

**PRACTICALLY ALL OFFERS ACCEPTED!**

Ship for

**PROMPT ACTION, IMMEDIATE PAYMENT**


**WALTER GISIGER CO.**

110 West 42 St. New York 36

Re - Bisects of The 1851 Issue  
And in Particular To The 10¢ 1855  
Luttl stated Page 71 -

" The Most Dangerous Examples  
of This Would-be Variety Were  
Made in San Francisco, A  
Number of Years Ago, By A Man  
Who Had, in Some Way, Secured  
A discarded Cancelling Stamp of over

The post office of That City. I Have  
See A Number of The Counterfeit  
Provisionals Made By Him. All  
Were On pieces of BUFF LAID  
paper, Etc "

12¢ 1851  Used As 6¢ New York To Detroit

STEAM  
BOAT

No. 121 - Diagonal half of 12c used as 6c,  
New York to Detroit, black grid falls on the  
nagle instead of on the bisected side,  
Steam-Boat in two lines, a rare cover.

Bertrand L. Drew Sale of March 23, 1923.

VIA NICARAGUA  
AHEAD OF THE MAIL

U.S. POSTAGE

5c  
S. H. H.

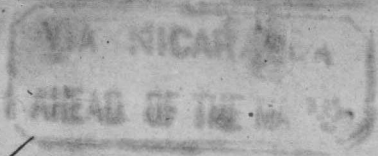
Recd

Black

Wm. C. Otis & Co

Beaver St

New York



U.S. POSTAGE



Recd

Black

Wm. C. Otis & Co

Beaver St

New York

offered to SBA

by Malesworth

12/8 - 1950

@ 250<sup>00</sup>

Box 18 - 318 - 8 X 10 -

12¢ Bisect cover - 1 Sep 53 -

H.R.Sale 9/26/45



*For Vanderpitts*  
*Sep 12*

Blue

VIA NICARAGUA  
AHEAD OF THE MAIL



*Chas. M. ...*  
*...*

Black

*W. Court St.*

*Wm. ...*

By C.E.H.  
6/7-49

C



*John D. Brown*

Robson Lowe  
Sale - Philo  
11/20 - 48  
4 - Lot 88  
Letter Dated S.F.  
July 30 1858  
Stamp - Bad Ironed  
out Crease  
White F.L.

#88

April 53

DUE 20



John F. Brady Esq  
Care, E. Clapen  
219 Delancey St  
New York

Bv

HOOGH KIRK

Oct 12

1948

POSTAGE  
FIVE CENTS  
MISS MATILDA DONAGH  
FREDERICKTOWN  
WASHINGTON COUNTY  
PENNA.

From Original find  
1929

Photo

by

Cusale's

July 1949

Needham

Rolls etc.

POSTAGE  
TUT  
Miss Matilda Donaghoo  
Fredericktown  
Washington County  
Penn

From Original find  
1929

See

San Francisco  
File

Postmark  
with

PAID 6



Re - Richey and Emerson Bisects (12¢)

Kleeman wrote me 9/28-37

"He has noted the bisects to which you refer and they are beauties! He says he considers all bisects of this kind to be genuine because they were so intended to be by the original senders who had no knowledge that they would be accepted or not, depending entirely upon the whim of the postal clerk."

Pa'd



Master J. Fisher Smith,

Care of Adrian Low, Esq,

7  
Roxbury,  
Mass.  
U.S.A.



Carhart Cover

From SDA

From Burns

Sep 25 1853



Richey

SHIP  
SEP 25  
7  
Miss H. W. Kings  
Care Joshua Maxwell Esq -  
Portland -  
Main -



Miss H. W. Knapp  
Care John W. Maxwell Esq -  
Portland -  
Maine

THRU THE KINDNESS OF THE  
OWNER OF THE WITHIN ITEM,  
THIS PHOTOGRAPH WAS MADE  
BY STANLEY B. ASHBROOK. IT  
IS RESPECTFULLY REQUESTED  
THAT NO USE BE MADE OF  
THIS PRINT WITHOUT THE  
CONSENT OF THE OWNER OF  
THE ORIGINAL.







Siegel Sale  
Apr 21 1943

219	1851	1c Blue, two and 12c Black, pair one Bisected (31, 36) on small piece, Ms cancel, 20c rate probably double rate to Canada, Rare piece <b>(Photo)</b> .....	700.00
-----	------	--	--------

350

ORANGE

No Outer Ring

250

250

7 Bars

Blue Green

6 Bars

12¢ Bisect Cover

No Date

FAKE ?



Cover Addressed  
To

Miss Jenny E Coons  
St Louis  
Mo

No Other Marks



By  
H.W. CARHART JUNE 1 1939

Black

1851

12¢ BISECT

From New York  
To St Louis

529 ○ Upper right diagonal half of 12c used  
as 6c on cover from N. Y. City to St.  
Louis, Mo. The N. Y. town canc.  
covers the margins on all three sides.  
Very fine and rare 350 00

Sold  
@  
157<sup>50</sup>

C. R. HURD Sale  
Jan 11 1928



Miss Jerry E. Coons  
St. Louis Mo.



James B. Ford, Esq.

Amherst College.

Amherst.

Mass.

These Two Submitted  
5/24-37 By A.H. MURCHISON  
BOX 669 - LONG BEACH, CAL.  
Note Both Are OCT 25

12¢ 51 Bisect on cover

Hind sale - \$170.00

12¢ 51 BISECT  
Lot 115 - 12c black peculiarly cut and containing the upper right corner of the next stamp on cover from San Francisco to Boston, the cancellation covering the cut. Perhaps this was intended as three-quarters of 12c used as 9 cent; in any event a wonderfully fine and rare cover.

Bought by MacBride @ \$67.50

Worthington Collection in the J. C. Morgenthau & Co. Sale of Aug. 21, 22, and 23, 1917.



124 1851 BISECT  
Lot 46 - 12c, cut in half diagonally and  
used as 6c on original envelope.

Sold @ \$10.00

Bogert & Durbin Co. Sale of Jan. 31, Feb. 1,  
2, 3, 1894.

12¢ 1851 Bisect

Via Nicaragua - N.Y. Sep 9, 1853

Submitted to S.B.A. By P.F. 5/22/51

Certificate No. 3061 - 12¢ 1851 Bisect - Via Nicaragua -  
see S.B.A. photo - New York Sep 9 - Opinion - "In my  
opinion this cover is genuine. I have quite a record of  
covers that were carried by this mail and all show that  
the New York P.O. recognized the 12¢ halves on mail  
deposited Sep. 9, 1853."

Split of 124 1851 - "1 JAN" - Submitted For An  
Opinion By Philatelic Foundation Oct 4 - 1948 - Butt  
Envelope - Opinion By S.B.A. - ? Might Be Good  
- Might Be Bad - Quartz Lamp Shows Nothing  
Suspicious - Dark Butt Envelope - See Scrap Book  
No 17 - Page 23 - For Correspondence -



Friend Gardner Esq.  
Bay Harbor  
L. A.

IF GENUINE  
Then  
Jan, 1855

SIEGEL SALE OCT -7 1957

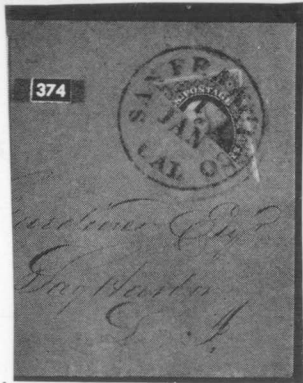
1 JAN 1855?

San Francisco JAN


on cover To SAG HARBOR L.I.

Submitted To S.B.A. BY P.F.  
Oct 1948

Sold @ \$460<sup>00</sup>  
460<sup>00</sup>



With P.F. CTF.

374  12c Black, Diagonal Bisect (17a). Tied San Francisco, Cal, Jan. 1 pmk on cover to Sag Harbor, L.I., Very Fine, with Philatelic Foundation Certificate

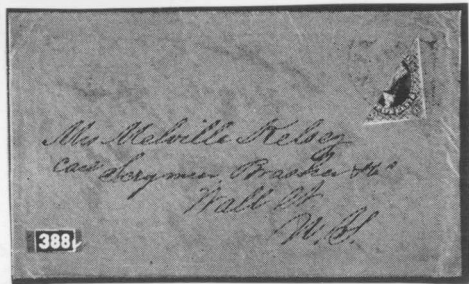
(Photo) E. XII


SIEGEL SALE

OCT - 7 1957

Tied S.F. Cal. Date ?

Sold @ \$165<sup>00</sup>



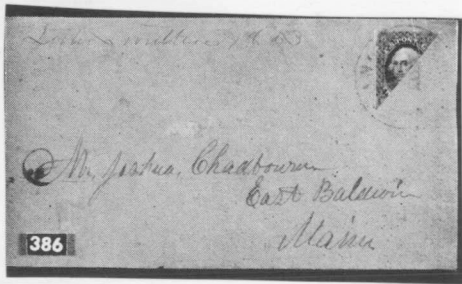
388  12c Black, Diagonal Bisect (17a). Tied light San Francisco, Cal. pmk,  
E. X. (Photo)

See Cover To Same Address From S.F. 16 Dec

SIEGEL SALE

OCT - 7 1957


Tied Light S.F.p.m.  
on Cover To  
Maine



No Date

Sold @ \$250<sup>00</sup>

P.F.C.H.

386  12c Black, Diagonal Bisect (17a). Tied light San Francisco, Cal. on cover to Maine, Very Fine, with Philatelic Foundation Certificate (Photo) E.XI

14 Jun 1852

By Philatelic Foundation  
Dec 15 1950 2771



Messrs. Saml Phillips & Co.  
R.R.

Batimore

Blue Folded  
Letter

Dated

New York Jun 14 1852

Letter Mentions

Enclosure of  
Circular

M.A.

1241851-Bisect plus 341851 - By P.F. Expert Committee Dec 15 1950  
S.B.A. opinion was " In My Opinion This Cover Is  
Genuine - The Bisect Used To Make A Triple Rate - Both Stamps  
- Shades And Impressions Are Correct For A Use In June 1852.



12¢ Bisect plus 3¢ 51  
N.York & Phila R.R.

See photo -

By Philatelic Foundation

Dec 15 1950

Sec Scrap Book 20 - p. 7  
20 p 13

12¢ 1851 - Bisect plus 3¢ 1851 - By P. F. Expert Committee Dec 15 1950  
S. B. A. Opinion Was " In My Opinion This Cover Is  
Genuine - The Bisect Used To Make A Triple Rate - Both Stamps  
- Shades And Impressions Are Correct For A Use In June 1852.

Addr To Messrs Sam Phillips & Co  
Baltimore  
Md