



## Fakes and Forgeries

from the Reference Collection of The Philatelic Foundation

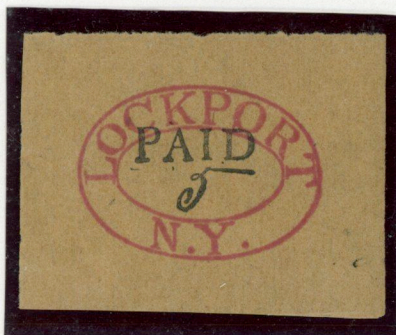
### POSTMASTERS' PROVISIONALS

#### ALEXANDRIA, VIRGINIA



5¢ Black on blue, Type 1. Counterfeit stamp and cancellation.  
Note that asterisks have additional lines not on the original.

#### LOCKPORT, NEW YORK



5¢ Red and black on buff.  
Counterfeit stamp. Only  
known example has "Paid"  
in red, not black.

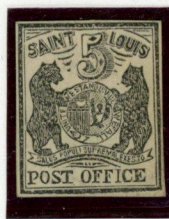


5¢ Black on blue.  
Counterfeit stamp and  
cancellation. Not known in  
this configuration.

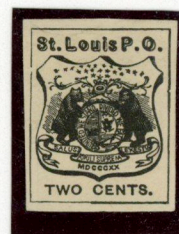
#### ST. LOUIS, MISSOURI



5¢ Black on Gray.  
Counterfeit stamp.



5¢ Black on White.  
Counterfeit stamp.



2¢ Black on White.  
Fantasy attributed to  
S. Allan Taylor





## Fakes and Forgeries

from the Reference Collection of The Philatelic Foundation

POSTMASTERS' PROVISIONALS  
BALTIMORE, MARYLAND



5¢ Black on White, tied by counterfeit "Paid" cancellation on folded cover.



Boxed 5¢ indicium on 1832 stampless cover (13 years before provisionals were issued).





## Fakes and Forgeries

from the Reference Collection of The Philatelic Foundation

### POSTMASTERS' PROVISIONALS

#### BRATTLEBORO, VERMONT



**5¢ Black on buff  
Counterfeit stamp  
and cancellation.  
Note cancel at bottom  
right of design only.**



**5¢ Black on white  
Counterfeit stamp**



**5¢ Black on white  
Bogus design  
attributed to  
S. Allan Taylor**



**5¢ Black on buff, counterfeit stamp, on imitation of a stampless cover.  
Note cancellation at bottom right of stamp, see counterfeit at top left of this page.**

*Courtesy of W T Crowe*





## Fakes and Forgeries

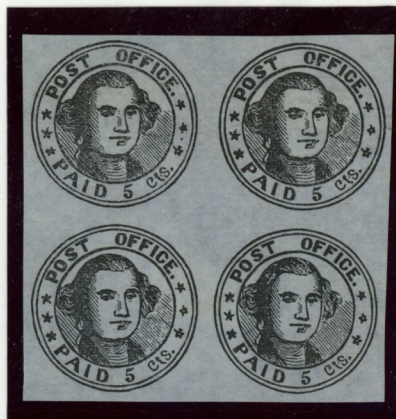
from the Reference Collection of The Philatelic Foundation

### POSTMASTERS' PROVISIONALS

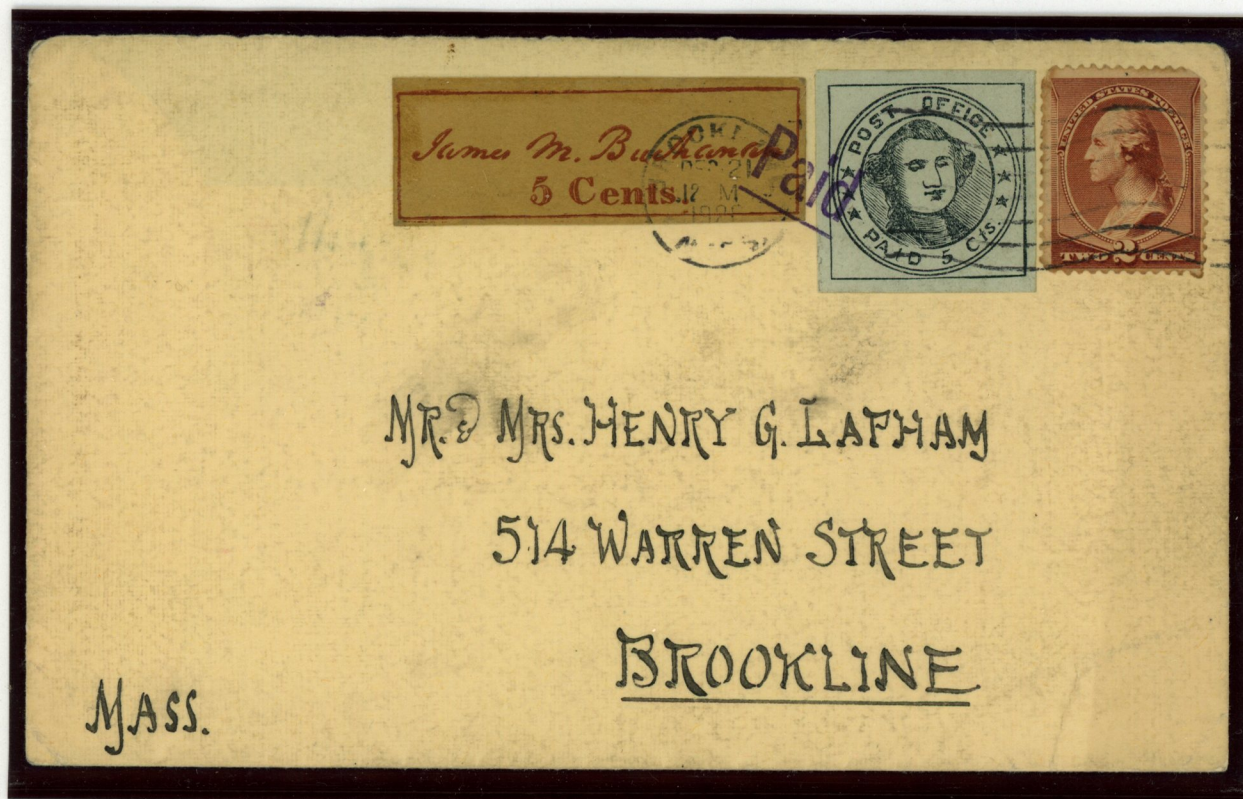
#### MILLBURY, MASSACHUSETTS



5¢ Black on Bluish  
Type 1 counterfeit with partial  
red "PAID". One of 8 known.



5¢ Black on Bluish, counterfeit  
Block of four showing four types  
One of two blocks known.



Bizzarre cover with obvious counterfeits of 5¢ Baltimore and 5¢ Millbury on 1926 envelope with 2¢ 1883 issue which paid the postage to Henry Lapham, a noted collector.





## Fakes and Forgeries

from the Reference Collection of The Philatelic Foundation

### POSTMASTERS' PROVISIONALS

NEW HAVEN, CONNECTICUT



**1871 Reprint**  
Dull blue on white with  
signature and "Copy".  
One of 20 made for  
William P. Brown.



**Counterfeit in Deep Red**  
on yellowish wove.  
Note the small ball at the  
end of the loop of  
numeral "5".



**1871 Reprint**  
Vermilion on white  
Signature in black  
J. W. Scott states that 30  
examples are known.



**1874 Reprint**  
Carmine on white,  
Signature in blue.  
Nine examples known.



**1876 Reprint**  
Red on yellowish,  
Approximately 100 made  
for N. F. Seebeck



**1932 Reprint**  
Red on white, facsimile  
signature handstamped in  
blue. 130 made in red and  
130 made in blue.





## Fakes and Forgeries

from the Reference Collection of The Philatelic Foundation

### POSTMASTERS' PROVISIONALS

NEW YORK, NEW YORK



**5¢ Black on Bluish, Forgery made by Jean de Sperati.**  
Note colorless spot between "N" and "T" of "Cents" which identifies this forgery.



**5¢ Black on Bluish**  
Reprint from plate of 9



**5¢ Black on bluish**  
Reprint from plate of 9  
with fraudulent "R H M"  
control mark.



**Counterfeit stamp with  
fraudulent blue cancellation  
and red control marking.**



**German facsimile with the  
tiny word "Falsch" at the  
base of Washington's ascot.**



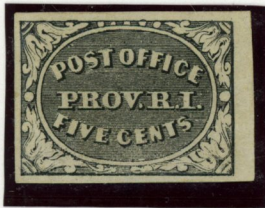


## Fakes and Forgeries

from the Reference Collection of The Philatelic Foundation

### POSTMASTERS' PROVISIONALS

#### PROVIDENCE, RHODE ISLAND



**5¢ Gray Black**  
Forgery made by Jean de Sperati which imitates position 12 of the genuine sheet.



**5¢ Gray Black**  
Counterfeit made in sheets of 100. Original only 11 positions out of sheet of 12.



**10¢ Gray Black**  
Block of four  
Counterfeit made in sheets of 100. Original only 1 position out of sheet of 12.



**5¢ Gray Black**, counterfeit from sheet of 100, tied by bogus "PAID" cancellation to otherwise genuine stampless cover.