



Fakes and Forgeries

from the Reference Collection of The Philatelic Foundation

GUAM

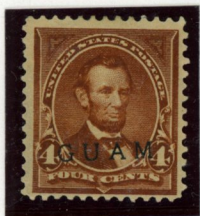
U. S. OVERPRINTED ISSUES



1¢ Deep Green
Two different counterfeit
overprints. Right stamp with
bogus purple overprint.



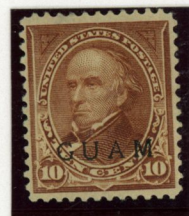
2¢ Carmine, Type III
Three different counterfeit overprints
Two with Wide Spacing



4¢ Lilac Brown
Counterfeit Overprint
Printed at an angle



10¢ Brown, Type I
Counterfeit Overprint
Overprint widely spaced



10¢ Brown, Type II
Counterfeit Overprint
Thin Letters
P F C # 6351
Courtesy of W T Crowe



50¢ Orange
Counterfeit Overprint
NYC postmark



\$1 Black, Type I
Counterfeit Overprint
Courtesy of W T Crowe



Fakes and Forgeries

from the Reference Collection of The Philatelic Foundation

GUAM

U. S. OVERPRINTED ISSUES



1¢ through 15¢ Overprinted Issues

Each with Counterfeit Overprint and tied by Counterfeit "Agana, Guam" cancellation.

The 10¢ stamp is the Type II (Special Printing) which was never available in Guam.

P F C # 32,315

Courtesy of W T Crowe



Fakes and Forgeries

from the Reference Collection of The Philatelic Foundation

PHILIPPINES

U. S. OVERPRINTED ISSUES



**15¢ Olive Green
Counterfeit Overprint
Too Long and Too Thick
Probably Made by
Fournier**



**50¢ Orange
Counterfeit Overprint
Too Long and Too Thick
Probably Made by
Fournier**



**4¢ Orange Brown
Counterfeit Overprint
Too Short**



**6¢ Lake
Counterfeit Overprint
Too Short
Angle Wrong
Letters Too Thin**



**2¢ Carmine
Counterfeit Overprint
Too Long
Angle Wrong**



**12¢ Bright Blue
Counterfeit Handstamped Victory Overprint
Color Wrong, P F C # 12,509**



Fakes and Forgeries

from the Reference Collection of The Philatelic Foundation

PHILIPPINES MADRID MANILA ISSUE



8¢ Orange Brown 10¢ Deep Blue 12¢ Red Orange 20¢ Orange Yellow 30¢ Gray

Each with Counterfeit Overprint

LONDON-ORIENT FLIGHT ISSUE



16c Olive Green
Counterfeit Overprint
Color Wrong, Too Pale